

ANSCHLUSSSYSTEME topar-A

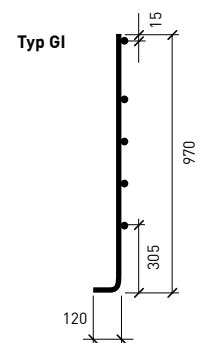
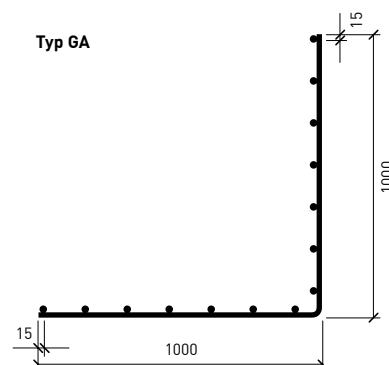
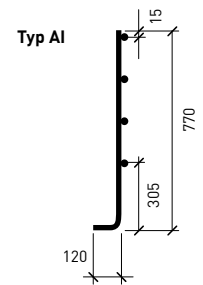
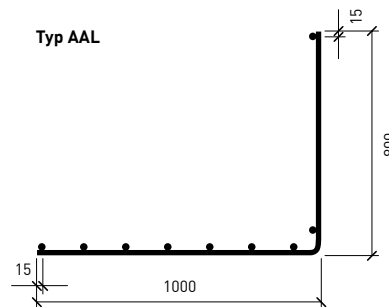
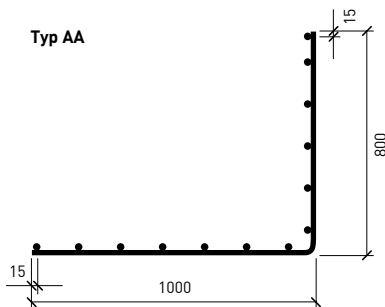
ANSCHLUSSYSTEME topar-A

Anschlusswinkel

Typ	Durchmesser		Teilung		A _s längs [mm ² /m]	A _s quer [mm ² /m]	Gewicht [kg/Stück]
	LD [mm]	QD [mm]	längs [mm]	quer [mm]			
AA 250	7	7	150	150	257	257	36.294
AA 330	7	8	150	150	257	335	41.426
AA 420	8	8/10	150	150	335	424	53.399
AAL 330	7	8	150/700	150	(257)	335	35.386
AI 250	7	7	150	150	257	257	14.279
AI 330	8	8	150	150	335	335	18.676
GA 330	7	8	150	150	257	335	45.385
GA 420	8	8/10	150	150	335	424	58.489
GA 520	8/10	10	150	150	424	524	73.291
GI 330	8	8	150	150	335	335	23.100
GI 420	8/10	8/10	150	150	424	424	28.916

Korblänge 5.00 m

Überstand Längsdrähte 250 mm

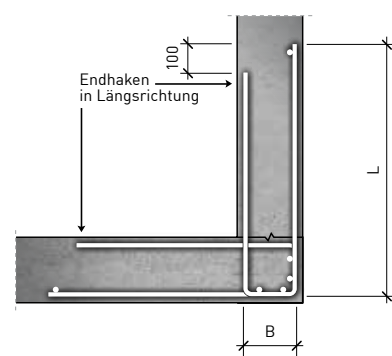


ANSCHLUSSYSTEME topar-A

Anschlusskörbe FIRIPA®

Typ	Bügel ∅ [mm]	Bügel- abstand [mm]	A _s [mm ² /m]	B [mm]	L [mm]	Längsdraht ∅ [mm]	Gewicht [kg/Stück]
90 N	8	200	251	90	700	3 x 6	10.638
130 N	8	200	251	130	700	3 x 6	10.875
150 N	8	200	251	150	700	3 x 6	10.992
180 N	8	200	251	180	700	3 x 6	11.169
110 C	8	150	335	110	700	3 x 6	13.674
170 C	8	150	335	170	700	3 x 6	14.148
110 M	10	200	393	110	850	3 x 6	18.417
140 M	10	200	393	140	850	3 x 6	18.693
170 M	10	200	393	170	850	3 x 6	18.972
190 M	10	200	393	190	850	3 x 6	19.158
110 V	10	150	523	110	850	3 x 6	23.889
140 V	10	150	523	140	850	3 x 6	24.258
190 V	10	150	523	190	850	3 x 6	24.876
190 S	12	150	754	190	950	3 x 7	38.949
240 S	12	150	754	240	950	3 x 7	39.837

Korblänge 3.00 m



 **STAHL GERLAFINGEN**
AFV BELTRAME GROUP

**Stahl Gerlafingen AG, Bahnhofstrasse, Postfach
 CH-4563 Gerlafingen (Switzerland)**
 Telefon 032 674 22 22
 info@stahl-gerlafingen.com
 www.gruppobeltrame.com



12.2017/D